

SHANGRI-LA

— COLLECTION —



SAMUEL & SONS
THE ROGER THOMAS COLLECTION





Mandarin Cloud Beaded Border in Seacrest and Pale Gold

“ SHANGRI-LA is the city of romantic dreams, the earthly paradise. This collection of ethereal, hand-beaded, embroidered silk and linen borders created with meticulous craftsmanship utilizes techniques and materials from once upon a time. ”

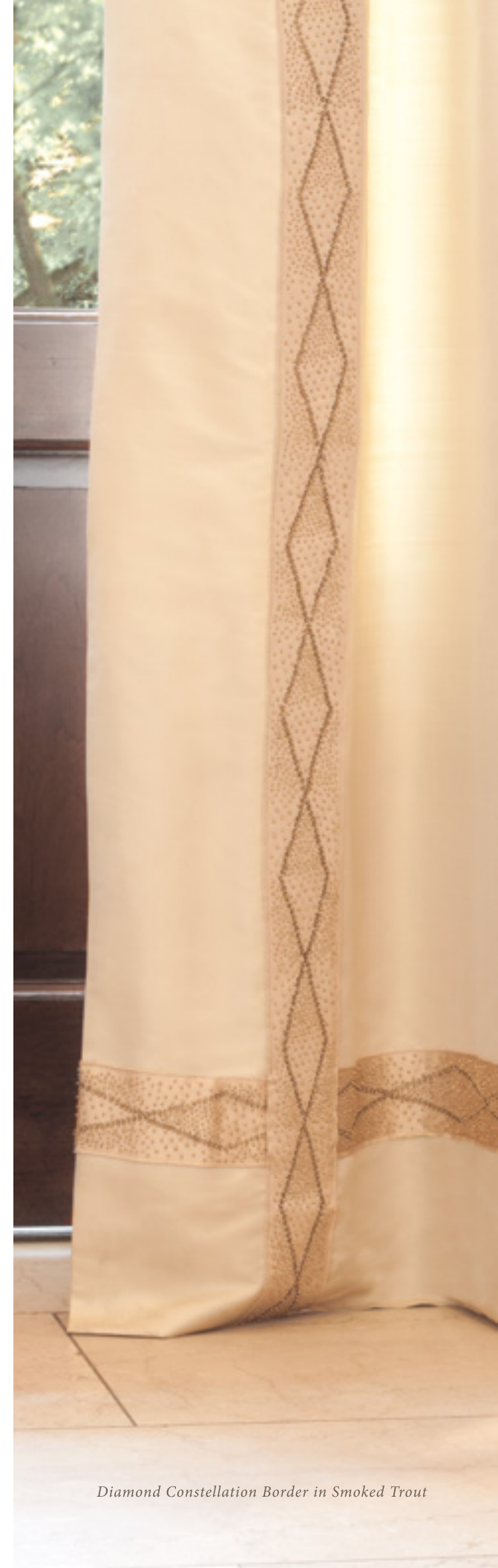
- ROGER THOMAS



As a leader in hospitality design, Roger Thomas is best known for his iconic interiors at the Bellagio, Wynn Las Vegas, Encore at Wynn Las Vegas, Wynn Macau and Encore Macau. Mr. Thomas is currently developing designs for his latest highly anticipated project, the Wynn Cotai Palace. He has been recognized for his design achievements and been honored 4 times as an Architectural Digest’s AD 100, International Hotel/Motel & Restaurant Show Designer of the Year (2008), elected to the Hospitality Design Platinum Circle (2005) and received a Lifetime Achievement award from the Network of Executive Women in Hospitality. Mr. Thomas is currently a member of the Smith Center for the Performing Arts board and he previously served on the board Design Industries Foundation Fighting Aids (DIFFA).



Diamond Constellation Border in Smoked Trout and Mandarin Cloud Beaded Border in Pale Gold



Diamond Constellation Border in Smoked Trout

“Inspired by the places I love and by the sheer beauty of these techniques of artisanal craft and handwork, I began drawing the most romantic and timeless effects I could dream. These are the qualities I wanted to evoke in Shangri-La.”

- ROGER THOMAS

Elysian Embroidered Border in Celadon, Délicat Silk Fan Edge in Cream, China Cloud Embroidered Border in Chantilly Cream and Aqua Mist



Elysian Embroidered Border in D'Or and China Cloud Embroidered Border in Chantilly Cream

China Cloud

An organic rendering of clouds through hand-embroidered French knots and satin stitches on linen.

Elysian

A mystical botanical pattern of lustrous embroidered leaves, enveloped in a cascade of circles sitting on a silk satin ground. Its geometric character emerges from the rhythm of the alternating leaves.

Aslan

Graphic in its interpretation of animal skin patterning, rendered with bugle beads surrounded by petite seed beads.

Mandarin Cloud

An ornate, celestial pattern interpreted through hand-embroidered jeweled beads. The organic cloud formations of glistening beads radiate across the fine silk satin border beneath.

Diamond Constellation

Jeweled beads dance along the silken surface, clustering like constellations and dispersing like the stars. Sequins form this diamond geometric and are accentuated by hand-sewn jewels.

Diamond Constellation Border in Ash and Mandarin Cloud Beaded Border in Smudge



SAMUEL & SONS, the premier passementerie tradition in the interior design community, announces the launch of its latest creative collaboration with Roger Thomas, world-renowned interior designer of Wynn Resorts.

“There are places I visit that cause the immediate sensation of being in another world. Certain cities and locations transport me with a sense of connection to my imagination, places I visit that seem to me most dreamlike such as Venice, Seville, and Beijing,” said renowned designer Roger Thomas, the creative force behind Shangri-La from Samuel & Sons. “These places inspire great flights of creativity. This is also true of working with age-old, intricate techniques and the most exquisite materials such as silk embroidery and beadwork.”

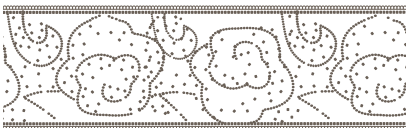
“If I could dream the perfect world, it would include this very special and exotic passementerie,” Thomas said. “Shangri-La is the city of romantic dreams, the earthly paradise and thus this is a collection of ethereal, hand-beaded, embroidered silk and linen borders which explores patterns through a broad palette of sumptuous hues.”



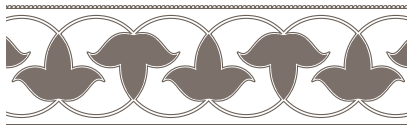
China Cloud Embroidered Border in Rock Salt and Flax, ¾" Liège Linen Cord with Tape in Cream and 1/8" Harbour Cord with Tape in Flax



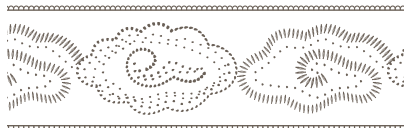
Shangri-La Collection



BT-56947 3" (76mm) Mandarin Cloud Beaded Border
Available in Lapis, Venetian Red, Pale Gold, Smudge, Pearl and Seacrest



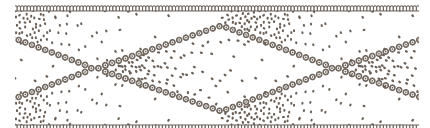
BT-56953 2.5" (62mm) Elysian Embroidered Border
Available in Celadon, Seine Bleu, Fontaine, D'Or and Vieil Ivoire



BT-56952 3" (76mm) China Cloud Embroidered Border
Available in Spring Leaf, Rubans Red, Aqua Mist, French Blue, Portobello, Rock Salt, Flax and Chantilly Cream



BT-56951 2.5" (62mm) Aslan Beaded Border
Available in Onyx, Smoky Quartz, Bronze and Pale Gold



BT-56948 3" (75mm) Diamond Constellation Border
Available in Smoked Trout, Oro, Muschio, Bordeaux and Ash

Shown above: China Cloud Embroidered Border in Chantilly Cream and Spring Leaf, Mandarin Cloud Beaded Border in Pearl, 3/4" Bandeau Border in Morning Glory, 1/4" Le Jardin Silk Cord with Tape and Le Jardin Silk Chair Tassel in Ecu

On cover: Aslan Beaded Border in Smoky Quartz

Special thanks to our collaborators: fabrics and wallcoverings by Jim Thompson, lounge chair by Quintus and vanity stools by Caperton Collection.

USA 212.704.8000
EUROPE +44.020.7351.5153
WWW.SAMUELANDSONS.COM

SAMUEL & SONS
THE ROGER THOMAS COLLECTION

